

Listing # 2056

MLS # 09-



North Border Realty of MN

80 Acres Hunting Land



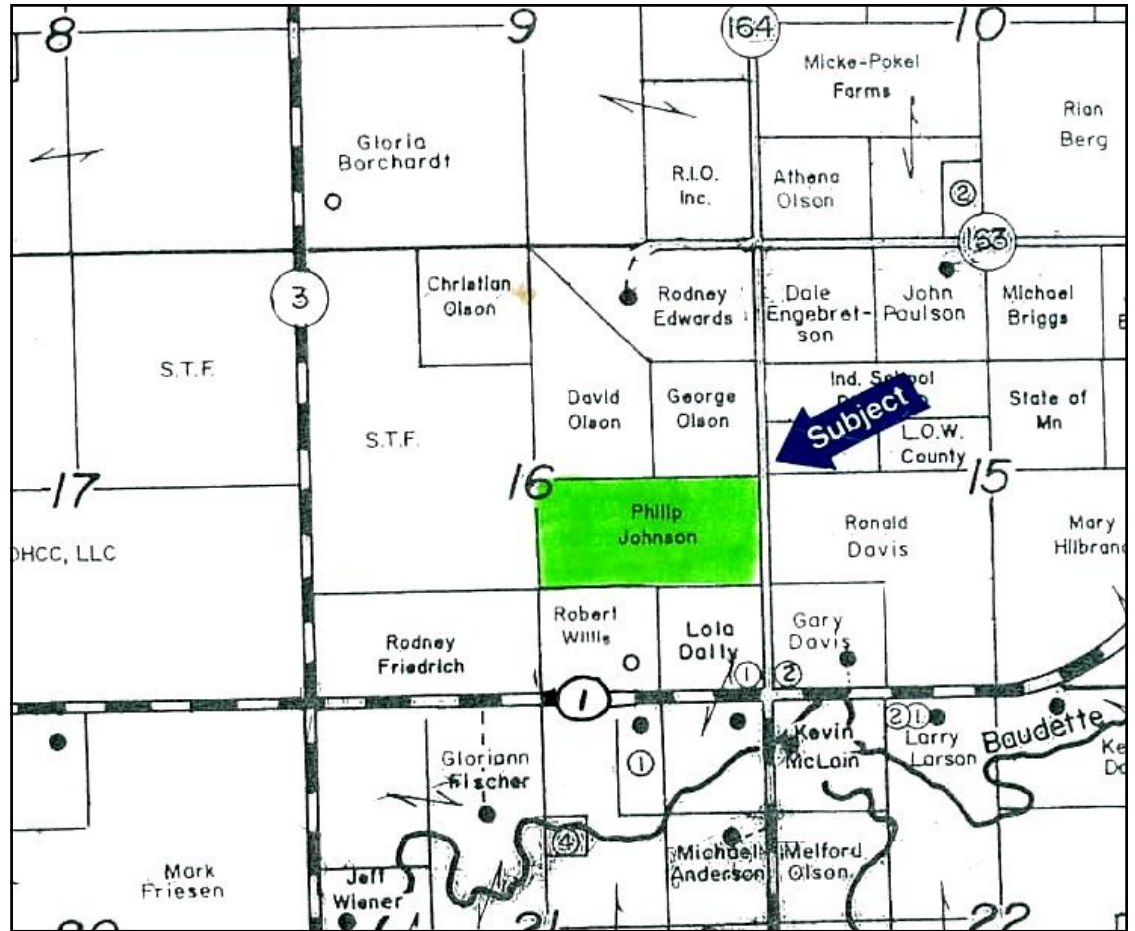
Wes Pederson, Agent

Cell 218-343-4201

Office#: 218-386-2219
wesped@centurytel.net
Pat LaValla, Broker

PO Box 626
Warroad, MN 56763

Directions: West of Baudette about 1/4 mile on Hwy 11, then south on County Road 164, go about 2 1/2 miles. Look for sign.



\$53,500.00

Mostly wooded, adjoining State land, located south of Baudette about 2 miles.

Information deemed reliable but not guaranteed.